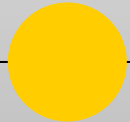


# **$\mu$ RWELL and Mini-Drift Progress**



09/10/2018 HEP Group Meeting

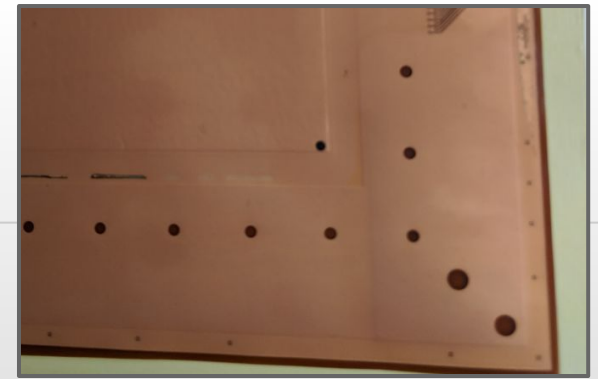
Jacqui and Sarah

## ● uRWELL Foil Thickness

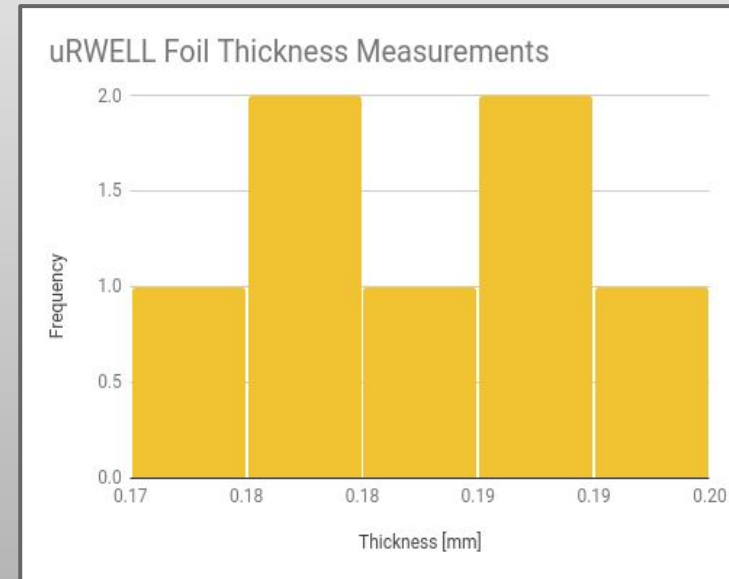
- Took 7 measurements of foil along perimeter with caliper

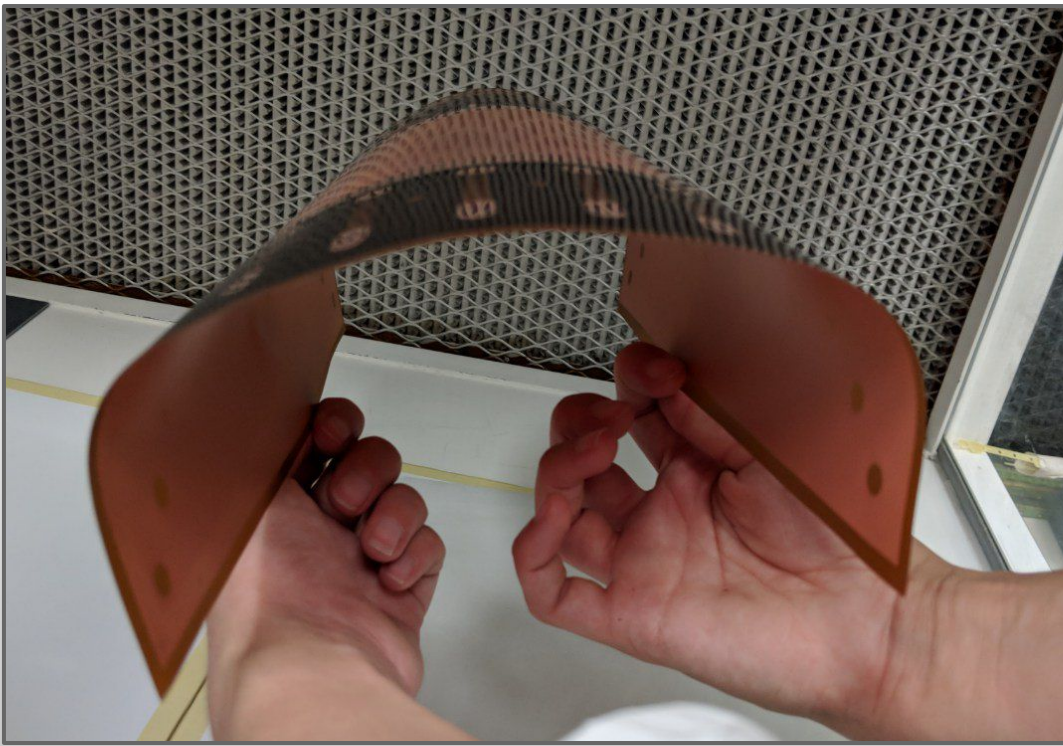
Average [mm]	0.18
Standard Deviation [mm]	0.0072

- Measuring active region: caliper with longer external jaws?

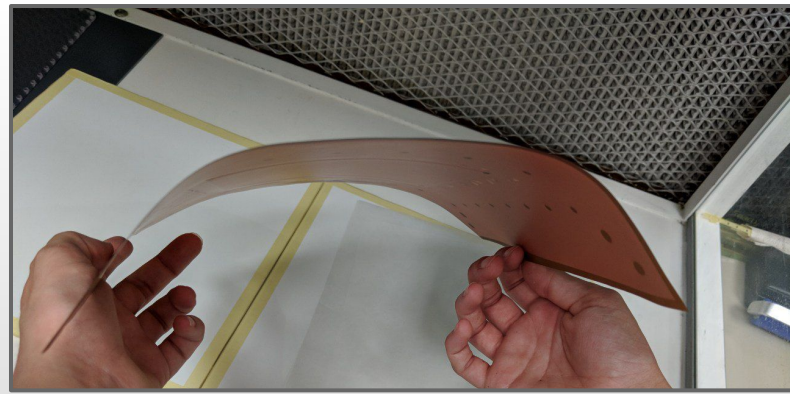


Variation of thickness seen underneath foil

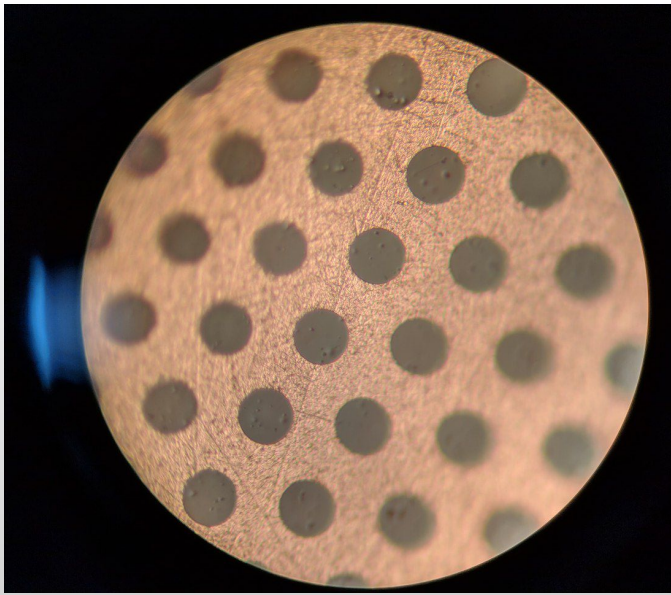




Initial observations: thicker over active region due to extra layers, therefore does not bend uniformly; no signs of delamination, creasing when  $r \sim 1$  inch

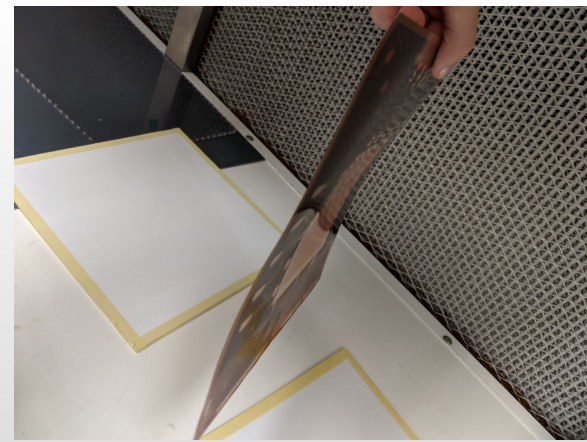
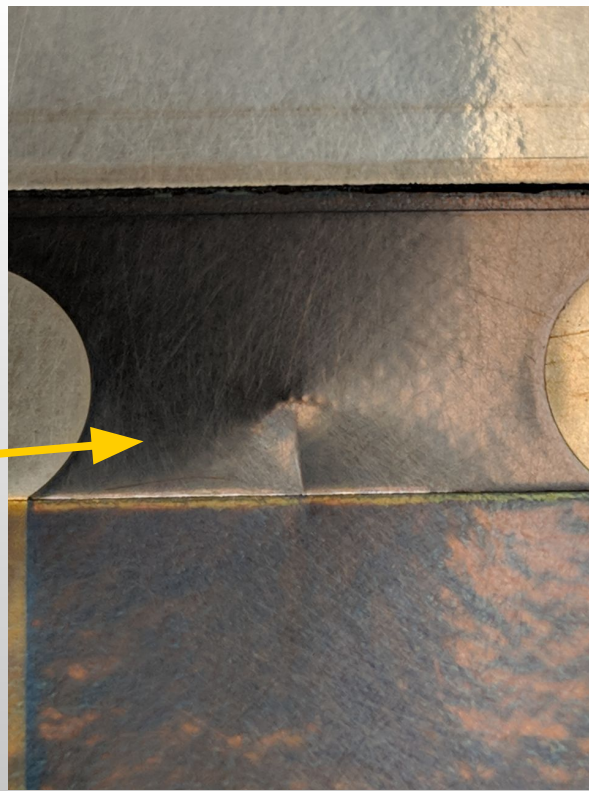
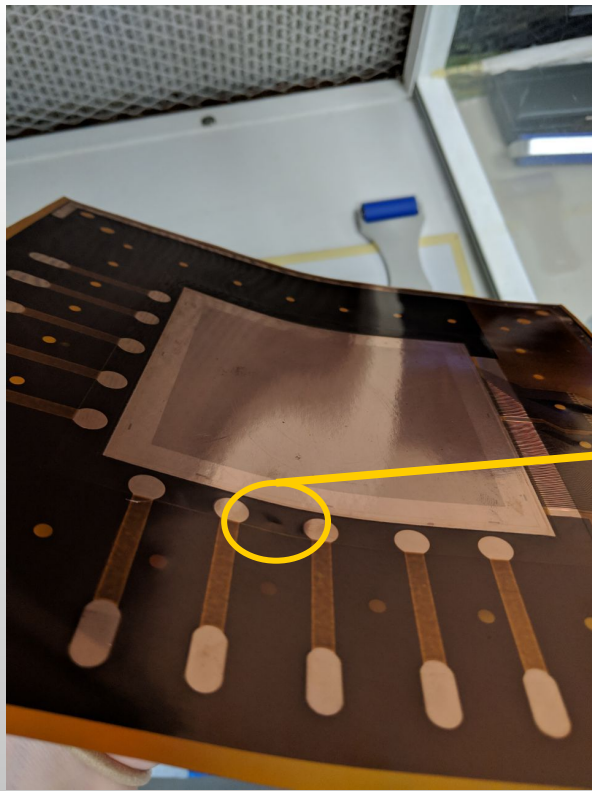






*Preliminary testing inconclusive;  
stable fixture with smaller radius  
required for better understanding;  
mount should be free-standing and  
fit atop jack stand*





Foil retains slight curve after testing cylindrical configuration, but this appears to be mostly reversible

Proper care must be taken to support foil while bending to prevent creasing from occurring at boundary of active region

